

coro CALYPSO

Arr Paolo Silvestri

A

B

C

8 16 8

IT'S SO LONG I'VE BEEN HOME

IT'S SO LONG I'VE BEEN HOME

IT'S SO LONG I'VE BEEN HOME

IT'S SO LONG I'VE BEEN HOME

D

8

IT SEEMS THERE IS NO PLACE TO ROAM

IT SEEMS THERE IS NO PLACE TO ROAM

IT SEEMS THERE IS NO PLACE TO ROAM

IT SEEMS THERE IS NO PLACE TO ROAM

MA - NY GIRLS 'ROUND THE WORLD NOW I HAVE FOUND

MA - NY GIRLS 'ROUND THE WORLD NOW I HAVE FOUND

MA - NY GIRLS 'ROUND THE WORLD NOW I HAVE FOUND

MA - NY GIRLS 'ROUND THE WORLD NOW I HAVE FOUND

E

F

THERE'S ON - LY ONE

YES I'VE SAILED

THERE'S ON - LY ONE

YES I'VE SAILED

THERE'S ON - LY ONE

YES I'VE SAILED

THERE'S ON - LY ONE

YES I'VE SAILED

ROUND THE HORN AND I'VE RODE OUT MA - NY A STORM

ROUND THE HORN AND I'VE RODE OUT MA - NY A STORM

ROUND THE HORN AND I'VE RODE OUT MA - NY A STORM

ROUND THE HORN AND I'VE RODE OUT MA - NY A STORM

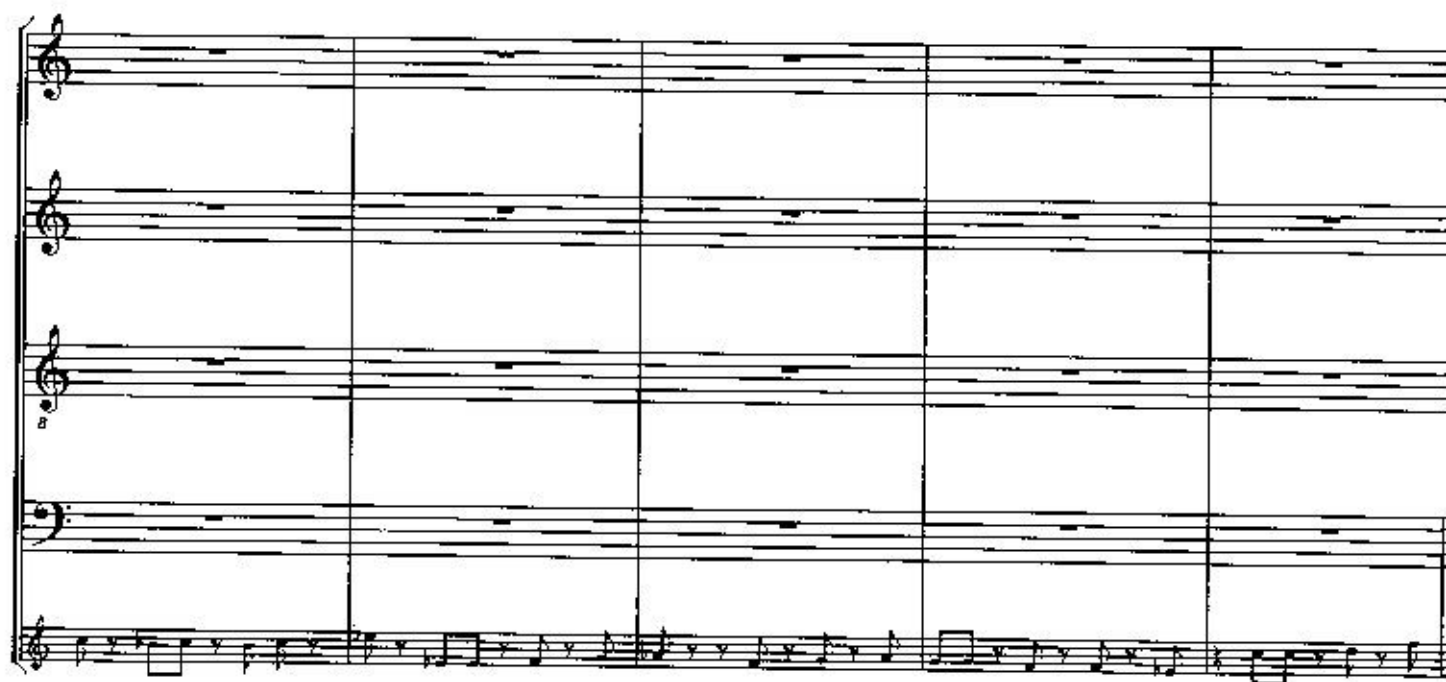
G

ROUND THE HORN AND I'VE RODE OUT MA - NY A STORM

ROUND THE HORN AND I'VE RODE OUT MA - NY A STORM

ROUND THE HORN AND I'VE RODE OUT MA - NY A STORM

ROUND THE HORN AND I'VE RODE OUT MA - NY A STORM



AN - GE - LI - NA AN - GE - LI - NA PLEASE BRING DOWN YOUR CON - CERTI - NA AND

AN - GE LI - NA AN - GE - LI - NA PLEASE BRING DOWN YOUR CON - CERTI - NA AND

AN - GE - LI - NA AN - GE - LI - NA PLEASE BRING DOWN YOUR CON - CERTI - NA AND

AN - GE LI NA AN - GE - LI - NA PLEASE BRING DOWN YOUR CON CERTI - NA AND

PLAY A WEL - COME TO ME 'CAUSE I'LL BE CO - MIN' HOME FROM SEA

PLAY A WEL - COME TO ME 'CAUSE I'LL BE COMIN' HOME FROM SEA

PLAY A WEL - COME TO ME 'CAUSE I'LL BE COMIN' HOME FROM SEA

PLAY A WEL - COME TO ME 'CAUSE I'LL BE COMIN' HOME FROM SEA

AN-GE-LINA AN-GE-LI-NA PLEASE BRING DOWN YOUR CON-CERTI-NA AND

AN-GE-LINA AN-GE-LI-NA PLEASE BRING DOWN YOUR CON-CERTI-NA AND

AN-GE-LINA AN-GE-LI-NA PLEASE BRING DOWN YOUR CON-CERTI-NA AND

AN-GE-LINA AN-GE-LI-NA PLEASE BRING DOWN YOUR CON-CERTI-NA AND

9 16

PLAY A WEL-COME FOR ME 'CAUSE I'LL BE COMIN' HOME FROM SEA

9 16

PLAY A WEL-COME FOR ME 'CAUSE I'LL BE COMIN' HOME FROM SEA

9 16

PLAY A WEL-COME FOR ME 'CAUSE I'LL BE COMIN' HOME FROM SEA

9 16

PLAY A WEL-COME FOR ME 'CAUSE I'LL BE COMIN' HOME FROM SEA

AN-GE-LINA AN-GE-LI-NA PLEASE BRING DOWN YOUR CON-CERTI-NA AND

AN-GE-LINA AN-GE-LI-NA PLEASE BRING DOWN YOUR CON-CERTI-NA AND

AN-GE-LINA AN-GE-LI-NA PLEASE BRING DOWN YOUR CON-CERTI-NA AND

AN-GE-LINA AN-GE-LI-NA PLEASE BRING DOWN YOUR CON-CERTI-NA AND

Handwritten musical score for the song "PLAY A WEL-COME FOR ME". The score is written on four staves (treble and bass clef). The melody is in the treble clef, and the bass line is in the bass clef. The lyrics are: "PLAY A WEL-COME FOR ME 'CAUSE I'LL BE COMIN' HOME FROM SEA". The score includes a key signature of one sharp (F#) and a 4/4 time signature. There are four measures of music, each with a measure rest in the final measure. The number "9" is written in the right margin of each staff.

PLAY A WEL-COME FOR ME 'CAUSE I'LL BE COMIN' HOME FROM SEA

PLAY A WEL-COME FOR ME 'CAUSE I'LL BE COMIN' HOME FROM SEA

PLAY A WEL-COME FOR ME 'CAUSE I'LL BE COMIN' HOME FROM SEA

PLAY A WEL-COME FOR ME 'CAUSE I'LL BE COMIN' HOME FROM SEA

Handwritten musical score for the song "DON'T DON'T STOP THE CAR-NI-VAL". The score is written on four staves (treble and bass clef). The melody is in the treble clef, and the bass line is in the bass clef. The lyrics are: "DON'T DON'T STOP THE CAR-NI-VAL". The score includes a key signature of one sharp (F#) and a 4/4 time signature. There are four measures of music, each with a measure rest in the final measure. The number "9" is written in the right margin of each staff.

DON'T DON'T STOP THE CAR-NI-VAL

DON'T DON'T STOP THE CAR-NI-VAL

DON'T DON'T STOP THE CAR-NI-VAL

DON'T DON'T STOP THE CAR-NI-VAL

Handwritten musical score for the song "DON'T DON'T STOP THE CAR-NI-VAL". The score is written on four staves (treble and bass clef). The melody is in the treble clef, and the bass line is in the bass clef. The lyrics are: "DON'T DON'T STOP THE CAR-NI-VAL". The score includes a key signature of one sharp (F#) and a 4/4 time signature. There are four measures of music, each with a measure rest in the final measure. The number "9" is written in the right margin of each staff.

DON'T DON'T STOP THE CAR-NI-VAL

DON'T DON'T STOP THE CAR-NI-VAL

DON'T DON'T STOP THE CAR-NI-VAL

DON'T DON'T STOP THE CAR-NI-VAL

Handwritten musical notation for a piano accompaniment, organized into four measures. Above the staves are handwritten labels: O, P, Q, R, S. Above the first measure is the number 8, and above the second measure is the number 8. Above the third and fourth measures is the number 16. The notation consists of four staves, each with a treble clef and a key signature of one sharp (F#). The notes are mostly whole and half notes, with some rests.

Handwritten musical notation for a vocal melody, organized into four measures. The first three measures are marked with "(IDEM)". The fourth measure contains the lyrics "DON'T DON'T STOP THE CAR-NI-VAL". The notation consists of four staves, each with a treble clef and a key signature of one sharp (F#). The notes are mostly whole and half notes, with some rests.

Handwritten musical notation for a vocal melody, organized into four measures. The first three measures are marked with "(IDEM)". The fourth measure contains the lyrics "DON'T DON'T STOP THE CAR-NI-VAL". The notation consists of four staves, each with a treble clef and a key signature of one sharp (F#). The notes are mostly whole and half notes, with some rests.

(IDEM)

(IDEM)

(IDEM)

DON'T DON'T STOP THE CAR-NI VAL

DON'T DON'T STOP THE CAR NI VAL

(IDEM)

(IDEM)

(IDEM)

DON'T DON'T STOP THE CAR-NI VAL

DON'T DON'T STOP THE CAR NI VAL

(IDEM)

(IDEM)

(IDEM)

DON'T DON'T STOP THE CAR-NI VAL

DON'T DON'T STOP THE CAR NI VAL

Handwritten musical score for "Don't Stop the Carnival" by The Beatles. The score is written on four staves (treble and bass clefs). The lyrics "DON'T DON'T STOP THE CAR N! VAL" are written below the staves. The notation includes various musical symbols such as notes, rests, and accidentals.